

# THERAPIST COLLECTION // NEW FEET PLUS // 2025

**MD** Class 1

## ADJUSTABLE FOOTWEAR WITH HARD ROCKER SOLE



CE 2017/745

**291-34-6110/7110**

Black leather · Extra high outer sole  
Only sold as half pairs:  
-6110 is left - 7110 is right  
Last 1 A + C · Size: 38-47



CE 2017/745

**162-81-110**

Black leather  
Last 4 · Size: 35-49  
Half pairs (left/right):  
362-81-6110/7110



CE 2017/745

**99-63-110**

Black leather  
Last 1 A + C · Size: 36-48  
Half pairs (left/right):  
299-63-6110/7110



CE 2017/745

**96-49-110**

Black leather  
Last 1 A · Size: 35-49  
Half pairs (left/right):  
296-49-6110/7110



CE 2017/745

**61-36-110**

Black leather  
Last 3 · Size: 35-49  
Half pairs (left/right):  
261-36-6110/7110



**81-97-210**

Black leather w. OrthoStretch™  
Last 4 · Size: 41-48

## ADJUSTABLE FOOTWEAR



CE 2017/745

**61-34-110**

Black leather  
Last B · Size: 35-49  
Half pairs (left/right):  
261-34-6110/7110



CE 2017/745

**61-35-1110**

Black textile  
Last 2 · Size: 35-49  
Half pairs (left/right):  
261-35-61110/71110



CE 2017/745

**81-73-110**

Black leather  
Last 2 · Size: 35-48  
Half pairs (left/right):  
281-73-6110/7110

## LAST OVERVIEW



A

**Last 1**  
Material: micro with PU  
A: with hard rocker sole  
B: without hard rocker sole  
C: as A + 2 mm rubber plaqua

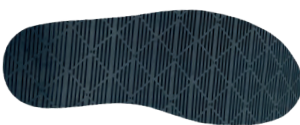


**Last 2**  
Material: micro with PU



B

**Last 3**  
Material: Micro with PU  
Hard rocker sole



C

**Last 4**  
Material:  
PU - grey area is antislip surface  
Hard rocker sole

